



Humboldt Inc. (CA) Branch



The Branch

February 2025

Vol 75. Issue 5



**Happy New Year--Join us for our
First Meeting of the Year**

***Elections and Voter Education in
Humboldt County***

Saturday, February 1
Wharfinger Building Lower Level
One Marina Way, Eureka

9:30 a.m. Social

10:00 a.m. Brunch

The menu for February is as follows:

Assorted muffins and pastries, coffee/tea, orange juice - \$12.00

Coffee/tea only - \$8.00

10:30 speaker: Nicole Goldbach, Humboldt County Elections Manager

Cost includes room rental, clean-up, supplies, food &/or beverages.

Please make your reservation by clicking here by Monday January 27. You may also make a reservation by calling Carolyn Miller at 707-798-1503

Nicole Goldbach is the Elections Manager for the County of Humboldt. Although a California native, she moved to Humboldt County from Austin, TX where she began her career in government. Prior to her work in the public sector, Nicole spent her undergrad at the University of California Santa Cruz studying philosophy and sociology. Following graduation, she



began her early career in broadcasting and print media.

During her tenure as an Elections Official she has managed the Statewide Primary Election of 2024 and the most recent Presidential Election of 2024. Within this time Nicole was awarded the credential of California Senior Executive from the California Association of Counties and Registered Elections Official credential from the California Association of Clerks and Elections Officials. Throughout her experience in government work she has excelled in government procurement procedures, court proceedings, public information and emergency communication, recruiting local leadership, advocating for local government at the legislative level, and now of course working to ensure the meticulous orchestration of election processes within Humboldt County



President's Message

This just in: For 2024, AAUW Humboldt received a star for programming in the AAUW 5-star recognition program. As I indicated to you in April of 2024, we received no stars in 2023, but I was certain it was a reporting issue. In September, I received the forms to complete for the 2024 Five-star campaign and completed them to the best of my ability with support with some of the board members. I feel certain that we should have received more stars but I did not have sufficient information for completing the report. For

2025, we're on track to receive a minimum of 3 stars. The AAUW Humboldt board of directors discussed the program at our January board meeting. We have put together a tracking form and our reporting will be more effective for 2025.

The stars are for:

- Advancement/finance: donations to the AAUW Greatest Needs Fund; maintaining or growing our membership; donations to support students to attend the National Conference for College Women Student Leaders (NCCWSL); commitments to the Legacy Circle (planned giving)
- Public Policy: have a public policy director; hold programs on topics related to the AAUW mission; conduct voter education or voter registration; meet with an elected official; encourage sign-ups for two-minute activists
- Governance: branch succession planning; implement a plan to participate in the 5-star program; participate in an affiliate survey; appoint a DEI officer; offer programming on DEI or JEDI (justice, equity, diversity and inclusion.)
- Programming: hold at least four programs that align with AAUW Mission
- Communications and External Relations: Share mission aligned posts, include AAUW activity in branch newsletter; designate a point person to AAUW on social media accounts; include information about Equal Pay Days in Branch communications and social media; ensure all branch leaders subscribe to AAUW emails and share the [resubscribe link](#) with members quarterly.

As mentioned, the AAUW Humboldt board met in early January. During that meeting we conducted a SWOT analysis to consider branch Strengths, Weaknesses, Opportunities and Threats. Please contact Beth Haynes or any member of the board if you would like to comment on the analysis or receive a copy of it. **A key area in which the branch board is weak is website and social media support. We really need one or two members to step up and help in this area. Please contact Beth if you can offer support.**

We also identified some real strengths, from our interest groups to our Scholarship and Tech Trek programs, AAUW Humboldt members find time to support each other and women and girls in our community. I'm so glad you welcomed me as part of it.

Beth Haynes, Branch President

Women's Re-Entry Scholarship 2024 Honorees

The winners of our AAUW Humboldt annual Re-Entry Scholarships were announced at the December 14 Holiday Luncheon. Due to the generous donations of our members, we were able to award SIX scholarships, for a total of \$12,000!! Luncheon attendees heard each of the students speak about their lives, their often non-linear paths back to academia, and then highlights of their current Cal Poly Humboldt studies, projects, and goals.



Here are the 2024 Re-Entry Scholarship recipients:

- **Annie Allen**, a Master's student in Natural Resources at CPH, is studying changes in fen vegetation communities in the Klamath Mountains to shed light on ecological processes that help create fens and highlighting potential impacts due to climate change.
- **Athena Doyle** is working on her MA at CPH. She wants to work with communities on planning and infrastructure development to combat the effects of global warming, "so that people don't have to walk to their car through flood water."
- **Jasmine Ellman** has been teaching in the Eureka schools while also developing swimming programs for the Redwood Coast Regional Center, especially for special needs students. She has returned to school to complete a Masters in Kinesiology with a Secondary Physical Education Teaching Credential.
- **Maritza Gamez** grew up near an industrial waste site and studied toxicology as an undergraduate. After seven years of working in analytical labs, she has started her MA at CPH studying the impact of the Klamath Dam removals by looking at changes in two species of small fish over time.
- **Lorene Lenhart** is a Junior in the Child Development and Family Relationships program. She has worked in many different capacities while raising her four children, including as an Aide at their school. Lorene sees herself as a potential bridge between teachers, students and parents in the classroom because of the skills her life experiences have taught her.
- **Aris Ownsby** is completing her MA in the fisheries Department at CPH. She is currently the lead technician for the California Collaborative Fisheries project, which recruits avid anglers to catch and release fish for recording and tagging.

***AAUW-Humboldt Re-entry Scholarship Winners are pictured above** (from left): Maritza Gamez, Athena Doyle, Jasmine Ellman, Annie Allen, Lorene Lenhart, Aris Ownsby*



The Re-Entry Scholarship Committee

(pictured at left) is so grateful to all members who made donations to allow for six awards this year. Our branch focuses on giving scholarships to women returning to school after a long break to provide an extra incentive for them to stay in school, even when facing significant financial, family, and work pressures. Every year, the applicant pool is so strong, it

is always difficult to choose the winners. The diverse experiences of these older students provide important contributions to the campus community.

***Our Re-Entry Scholarship Committee Members** (from left): Mary Lou Lowry, Autumn Chapman, Sharon Ferrett, Gina Rogers, Rosemarie Weaver, and Margaret Wallace. Missing: Becky MacQuarrie*

At the January 4 board meeting, the board decided to stay in closer touch with members by appointing a Board Member at Large (what we formerly called

the Liaison Officer) and a Courtesies Chair. Financial statements will now also appear in the newsletter. See below for details.

Board Member at Large

Do you have questions or issues you want to bring to the Board but don't know how or who to approach? Or lack the time to attend a Board meeting? You are represented by a Board Member At Large, who'll present your issues or concerns at a Board meeting on your behalf. This year's Member At Large is Deborah Harmon. She has been a member of this branch since 1990, and has previously held several positions on the Board. She can be contacted by phone, email, or in person at a Branch meeting.

Courtesies

Our branch has resumed the practice of having a member doing Courtesies. Do you know a member who is experiencing a death in their family, or undergoing a surgery? Or, conversely, celebrating a major change in their life like changing jobs or retiring, getting married, moving, or getting the addition of a new family member? Let Deborah Harmon know so she can send a congratulatory or sympathy card from the Branch to let them know they're in our thoughts.

Quarterly Financial Report

The following Statement of Activities (SoA) is a reflection of all our revenues and expenses for the current fiscal year to date. It was developed last year as an aid to filling out the annual reports required by California and is based on a suggested SoA provided on the AAUW CA website. Our projected budget, presented for branch approval at the May meeting, will be in the same format. If you have any questions about the format, feel free to ask. I will be at the February meeting.

Katie Wright, Treasurer

AAUW Humboldt (CA) Branch
Statement of Activities

| | July 1 thru December 31, 2024 | Budget | Over/(Under) Budget |
|--|-------------------------------|------------------|------------------------|
| Revenues | | | |
| Operating Income | | | |
| General | | | |
| Directory Advertising | - | 500.00 | (500.00) |
| Gen Fund Savings - Interest | 0.78 | | |
| Total General | 0.78 | | |
| Member Event | | | |
| Branch Meeting: Drinks Only | 128.00 | | |
| Branch Meeting: Meals | 2,972.00 | | |
| Total Member Event | 3,100.00 | 7,420.00 | (4,320.00) |
| Branch Dues | | | |
| Membership Dues: Branch | 2,314.00 | 2,470.00 | (156.00) |
| Total Operating income | 5,414.78 | | |
| Project Income | | | |
| Service Fund Savings-Interest | 0.30 | | |
| Fundraising Income (Restricted) | | | |
| Re-Entry Scholarships | | | |
| General Contributions | 4,475.00 | | |
| Interest Gp Contributions | 203.00 | | |
| Gala Contributions | 5,216.00 | | |
| Total Re-Entry Scholarships | 9,894.00 | 10,000.00 | (106.00) |
| Tech Trek | | | |
| Parent Subsidy | - | 300.00 | (300.00) |
| General Contributions | - | | |
| Interest Gp Contributions | - | | |
| Total Tech Trek | - | | |
| Total Fundraising Income | 9,894.00 | | |
| Community Action Project | | | |
| General Contributions | - | | |
| Miscellaneous Income | | | |
| Member Contributions | - | | |
| Other Income | - | | |
| Total Non-Restricted Income | - | | |
| Total Project Income | 9,894.30 | | |

AAUW Humboldt (CA) Branch
Statement of Activities

| | July 1 thru December 31, 2024 | Budget | Over/(Under) Budget |
|---------------------------------|-------------------------------|--------------|------------------------|
| Expenses | | | |
| Operating Expenses | | | |
| General | | | |
| AAUW Fund | - | 65.00 | (65.00) |
| Insurance | 490.00 | 449.00 | 41.00 |
| State Filing Fees | 30.00 | 25.00 | 5.00 |
| Supplies/Postage | | | |
| Postage | 106.81 | | |
| Office Supplies | - | | |
| Banking supplies | - | | |
| Total supplies/postage | 106.81 | 70.00 | 36.81 |
| P. O. Box Rental | 232.00 | 240.00 | (8.00) |
| Bank Fees - Gen | - | | |
| Total General Expenses | 858.81 | | |
| Member Event | | | |
| Venue | 660.00 | 1,180.00 | (520.00) |
| Meals | 682.41 | 6,240.00 | (5,557.59) |
| Guest Meals | 13.69 | 546.00 | (532.31) |
| Speaker's Gifts | - | 300.00 | (300.00) |
| Honorees Awards | - | 50.00 | (50.00) |
| President's gift | - | 80.00 | (80.00) |
| Total Member Event | 1,356.10 | | |
| Branch Support | | | |
| Branch Courtesies | - | 35.00 | (35.00) |
| Dues Assistance | 28.81 | 30.00 | (1.19) |
| Conventions/Conferences | - | - | - |
| Other Support | 141.23 | - | 141.23 |
| Directory Expense | 231.01 | 200.00 | 31.01 |
| Newsletter Expense | - | 80.00 | (80.00) |
| Discretionary/Promotional | - | - | - |
| Total Branch Support | 401.05 | | |
| Total Operating Expenses | 2,615.96 | | |

AAUW Humboldt (CA) Branch
Statement of Activities

| | July 1 thru December 31, 2024 | Budget | Over/(Under) Budget |
|--|-------------------------------|-----------|------------------------|
| Project Expenditures | | | |
| Service Fund Accounts | | | |
| Bank Fees - Svc | - | | |
| Fundraising Expenses | | | |
| Tech Trek | - | 175.00 | (175.00) |
| Re-Entry Scholarship | 135.10 | 175.00 | (39.90) |
| Total Fundraising Expense | 135.10 | | |
| Community Action Proj. (CAP) Funde | | | |
| TBD | - | 800.00 | (800.00) |
| Total CAP Funded | - | | |
| AAUW Donations | | | |
| Greatest Needs Fund | | - | |
| Educational Projects Funded | | | |
| Re-Entry Scholarship | 12,000.00 | 10,000.00 | 2,000.00 |
| Tech Trek Sonoma Camp | - | - | |
| Total Educational Projects Funded | 12,000.00 | | |
| Total Project Expenditures | 12,135.10 | | |
| Total Expenses | 14,751.06 | 20,740.00 | (5,988.94) |
| Excess Revenue over Expenses | 558.02 | | |
| Total revenue less reserved income | 5,414.78 | | |
| Total expenses less educ. funding | 2,751.06 | | |
| Excess Revenue over Expenses (excluding reserved funds) | 2,663.72 | | |

March 1 is the Annual Women's History Tea

It is time once again to consider candidates for the AAUW Humboldt Women's History honors. The branch board is already thinking of many good candidates. But it is our tradition to ask every member to consider Humboldt County women, past and present, who have made a difference in our communities. Attached is a nomination form. If you would like to propose a candidate to honor at our Women's History Tea, March 1. Please complete the form and return it to me by January 21. [A list of past winners of this award is in the process of being posted on the website.](#) You may contact me if you would like a copy.

Beth Haynes



2025 Women's History Tea Nominations

Each March we celebrate women from the past and present who have made a difference in Humboldt County. If you would like to nominate a recipient of this honor, please complete this nomination form and forward it to ehaynes@mnsi.net by January 21, 2025. The Board of Directors will be selecting recipients in early February. Please nominate a person or persons that you feel should be considered for this honor and explain why.

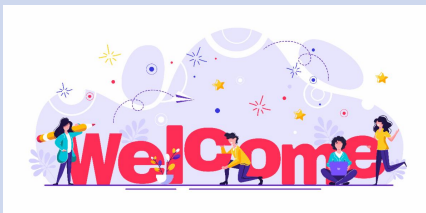
Your Name _____

I would like to nominate _____

In what way has this person/group made a positive difference in Humboldt County through her activities, education, occupations, or professions?

Please provide the contact information for your nominee:

EMAIL OR MAIL YOUR NOMINATION to:
Elizabeth Haynes (ehaynes@mnsi.net)
2615 N Street, Eureka, 95501



We have lots of new members: Please look for them at our meetings and welcome them. They are Donna Clark, Cathy Rigby, Jasmine Ellman, Martha Hayes, Marguerite Story-Baker, Paloma Rios, Annie Allen, Athena Doyle, Maritza Gamez, Lorene Lenhart and Aris Ownsbey

Why AAUW Public Policy Priorities Matter

by Nancy Major, Member AAUW California Public Policy Committee

Why do AAUW's Public Policy Priorities matter? They



shape the actions that we take as an organization, socially and legally.

AAUW's mission is to advance equity for women and girls. Our Public Policy Priorities guide how we encourage active citizenship toward the goal of advancing our mission. There are four branches to our Public Policy Priorities: Economic Security, Equal Access to Quality Public Education, Social and Racial

Justice, and Increased representation of Women in Leadership roles. Each of these priorities is further broken down into several action-oriented subcategories, such as enforcement of Title IX and passage of the ERA. Our 2023-25 priorities can be found at <https://www.aauw-ca.org/public-policy-priorities-ppp-revised/>.

As active participants in society we can help shape the laws and society that govern us, such as healthcare, environmental policies, sex education, curriculum and book banning, housing, childcare, voting rights, immigrants' rights, sexual harassment, domestic violence, racial and LGBTQ discrimination, and Title IX enforcement. We "advocate" or promote our mission through research, education and lobbying for legislation on the international, national, state, and local levels.

History has shown that our advocacy has made a big impact on national, state and local laws. In California alone, you can see the laws that AAUW sponsored, authored, and/or promoted, including those that were passed in the most recent session by going to [AAUW California Bill Tracking Report 2024 - Google Sheets](#). AAUW is also doing impactful work internationally, working to curtail human trafficking and promote civil and human rights for all immigrants, including through participation in the UN Convention on the Elimination of All forms of Discrimination Against Women (CEDAW). Over the next four years, there will be a lot of opportunities to use this legislative advocacy to push back against attempts to overturn long standing human rights and civil rights protections.

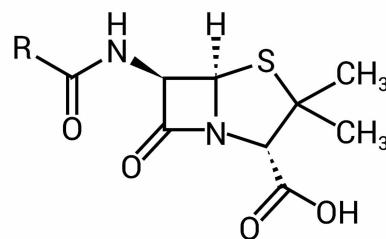
Our Public Policy Priorities also shape our efforts to push forward programs that break through educational and economic barriers for women such as speaker programs, scholarships, oversight of local school boards, leadership and salary training, STEM opportunities for students, and Diversity, Equity and Inclusion (DEI) programs.

Why do our Public Policy Priorities matter? They make us the most effective advocates for our collective mission to protect and expand gender equity. At the branch and individual levels, we can take advantage of as many opportunities as possible to operationalize our Public Policy Priorities, and through this work to actively promote AAUW's mission. AAUW as an organization relies on the branches to stay informed and to keep track of where our Public Policy Priorities may fall short, to form coalitions with local allies who have similar missions, and to assign branch members to focus where we can have the most impact.

Penicillin Girls and Moldy Mary

The forgotten and sometimes sticky history is of the cohort of six women whose work made Dr. Alexander Fleming's innovations forever change modern medicine. In London in 1928 the sharp-eyed Dr. Fleming noticed halos around some flecks of blue-green mold in his untidy laboratory. He dubbed the substance "mold juice" later changing it to "penicillin", after the fungus that produced it.

He tried purifying penicillin in the 1930s, but was unsuccessful. To unlock the mold's true therapeutic promise would take many more people and years of labor. A war was rapidly raising the need to save lives. A kind of mold factory was then run by six female technicians known as the "penicillin girls."



Penicillin
 $C_{16}H_{18}N_2O_4S$

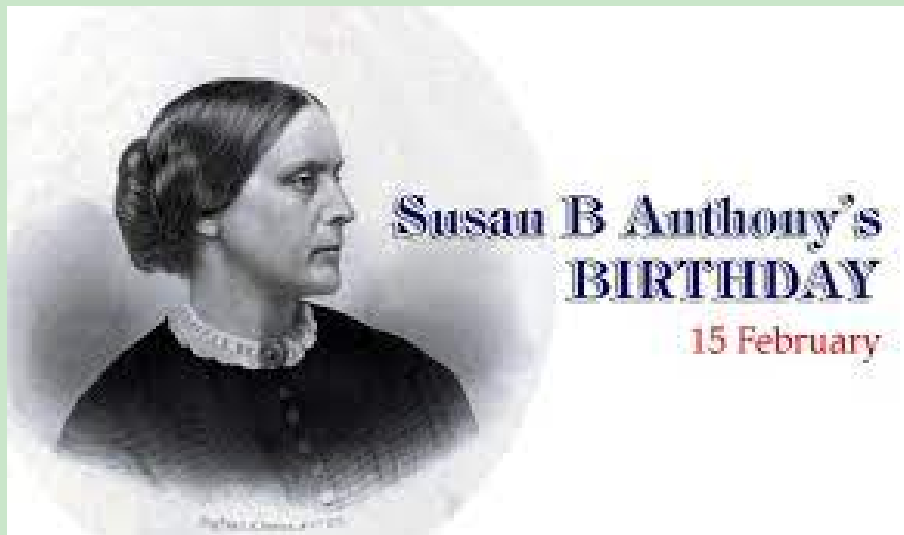
Fleming's mold was not yet producing enough so in 1941 the lab was moved from London to Peoria, Illinois, where the U.S. Department of Agriculture ran a fermentation lab. No luck yet, even though researchers and lay people sought mold specimens in all spoiled food and soil bacteria, from as far away as India and Australia..

In 1941 they struck gold. A spoiling cantaloupe, purchased at a local farmer's market by a woman named Mary Hunt, one of the lab techs (proudly nicknamed Moldy Mary), produced six times the amount of Fleming's mold. She remains unknown but the work of her melon has since saved more than 80 million lives.

This year, 2025, a small dried sample that was sent to the Smithsonian by Fleming long after he had been awarded the Nobel Prize, will be in a medical history exhibition, a reminder that History's great discoveries can come from the most unprepossessing places.

- She was tasked with finding moldy fruits, vegetables, cheese, and bread for penicillin research.
- Hunt found a moldy cantaloupe at a local farmer's market.
- The mold from the cantaloupe produced a strain of penicillin that was 200 times more potent than the original strain discovered by Alexander Fleming.
- The moldy cantaloupe strain became the basis for commercial penicillin strains used today

From The Smithsonian, shortened by Jean Guthrie



The Branch is published eight times a year by the Humboldt Branch of AAUW. Submissions of articles, news items and photos from members are welcome. Submit them by the 20th of each month to shelleydmitchell@gmail.com.

Please do not reproduce items without permission.

AAUW | PO Box 5116 | Eureka, CA 95502 US

[Unsubscribe](#) | [Update Profile](#) | [Constant Contact Data Notice](#)



Try email marketing for free today!